

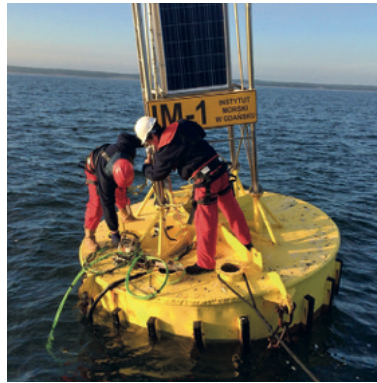
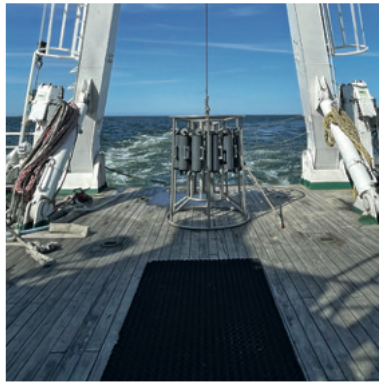


MARITIME INSTITUTE

GDYNIA MARITIME UNIVERSITY



SURVEY INFRASTRUCTURE LABORATORY



The **Survey Infrastructure Laboratory** is a specialised unit of the Maritime Institute at the Gdynia Maritime University, the main task of which is to keep charge of the survey and measurement equipment. The Laboratory services, inspects and, if possible, repairs measurement gear.

OUR EQUIPMENT INCLUDES SEVERAL DOZEN MEASUREMENT DEVICES, SUCH AS:

- **Multibeam echosounders** for detailed mapping of the seabed;
- **Sonars** used to map the seabed structure and detect underwater objects;
- **Ultra-Short Baseline (USBL)** systems for precise positioning of underwater vehicles and devices;
- **Tiltmeters**, which help monitor vessel tilt angle and stability;
- **Probes** used to measure depth and other water parameters;
- **Core-sampling devices**, which allow taking samples of sediments from the seabed for geological and environmental analyses;

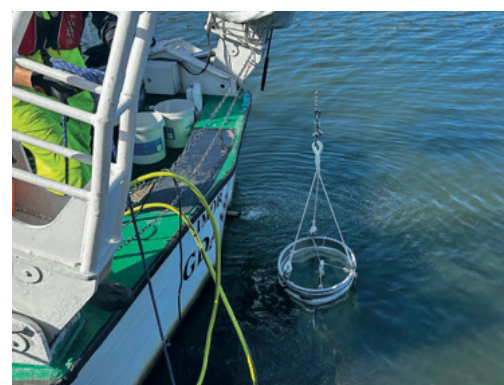
- **WorkROV SAAB Cougar underwater vehicles** used for complex underwater operations, such as seabed inspection and sampling;
- **Falcon SAAB SeaEye underwater vehicle** for seabed inspection;
- **Rosette sampler** – collecting water samples with an assembly of 12 automatically-opening cylindrical bottles;
- **Scoops and dredges** used to collect samples from the seabed;
- **CPT probe** for assessing the geophysical parameters of the tested substrate.

In addition, the SIL takes care of research vessel **IMOR R/V**, which is a floating multi-purpose oceanographic research laboratory operating at sea, and two small vessels, **Imoros 2** and **Imos 2**, which carry out measurement work in shallow water and closed water basins.

We actively participate in the mobilisation of measurement gear on these vessels, ensuring the highest quality and reliability of our services. Thanks to our experience and commitment, we cope even with the most demanding research and survey tasks both on land and at sea.

The Laboratory has an electronic and mechanical workshop where the equipment is prepared and adjusted for the needs of current project activities.

We invite you to cooperate with the Survey Infrastructure Laboratory, where precision and professionalism are the top priorities.



CONTACT

MARITIME INSTITUTE
GDYNIA MARITIME UNIVERSITY

- ph. +48 58 669 37 75
- im@im.umg.edu.pl
- im.umg.edu.pl