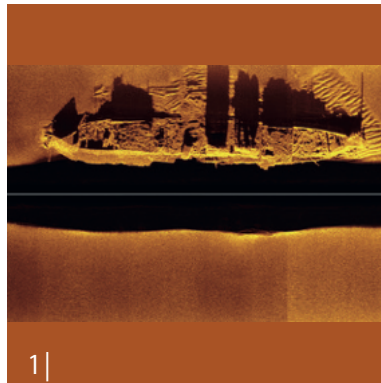


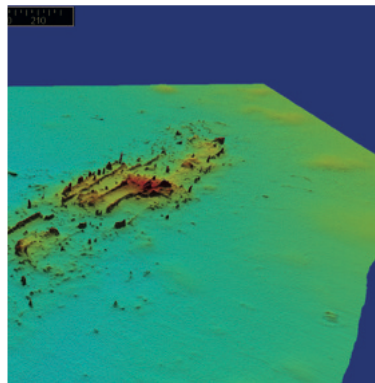
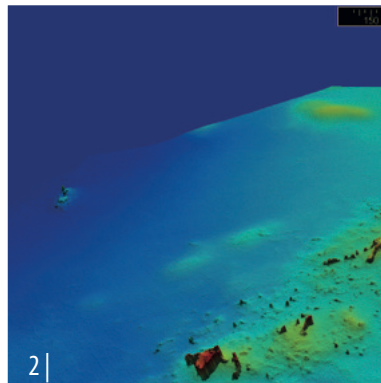


MARITIME INSTITUTE

GDYNIA MARITIME UNIVERSITY



OPERATIONAL OCEANOGRAPHY DEPARTMENT



The Operational Oceanography Department (OOD) is engaged in broadly defined research and development activities in operational oceanography at sea and the coastal zone. The OOD also carries out tasks commissioned by the maritime administration of the Republic of Poland and business entities operating at sea.

The Department conducts comprehensive marine environmental surveys, including geophysical and hydrophysical surveys. The OOD offers a wide range of services, including preparation of reports, compilations, studies, analyses and expert opinions, and biological, chemical and geological sampling.

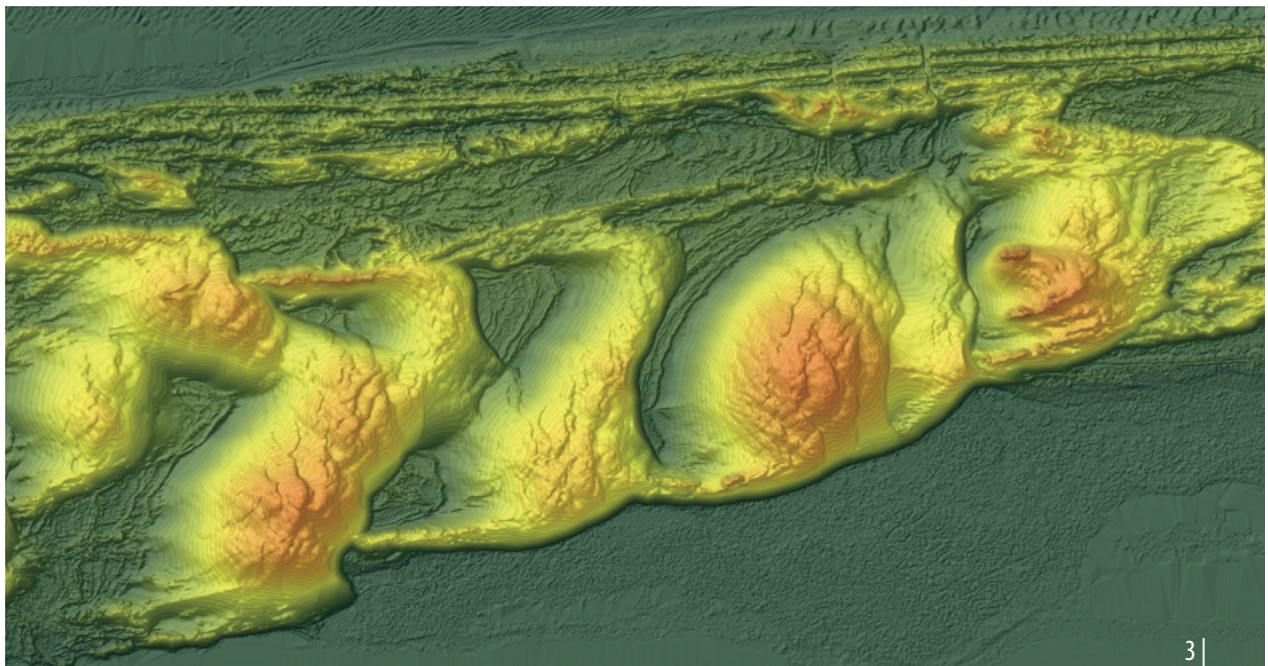
It also provides consultancy and advisory services in offshore surveys, thus supporting its clients in the decision-making process and helping them to undertake the right operations at sea. The findings of the research conducted at the OOD are regularly published in renowned scientific journals, which contributes to the global development of knowledge in oceanography and enhances our understanding of dynamic processes occurring in the marine environment.

1 | The "Catharina" punt wreck from the Bay of Rewa near Osłonino, SSS data from Edge Tech 4125 1600 kHz

2 | The "Stuttgart" hospital shipwreck from the Bay of Puck. MBES data from Reson Seabat 7125

MAIN FIELDS OF ACTIVITY

- pre-investment studies of the seabed for the construction and operation of various maritime structures and facilities, including wind farms, subsea cables and pipelines, sanitary collectors, and artificial reefs;
- inventory surveys of marine mineral deposits, measuring the degree of contamination and the volume of dredged material;
- providing information necessary for the design, construction and modernisation of marine hydro-technical facilities, collectors, port quays, and sailing harbours;
- research related to improving the safety of navigation and combating extraordinary threats at sea (forecasting hydrophysical and hydrodynamic conditions on the sea surface and in the water depth, forecasting the spread of oil and chemical spills, object drift etc.);
- research on the economy's ecological impacts on the environment and marine biocenosis (including wreck inventory surveys and impact assessment);
- research related to the evaluation of marine renewable energy resources (wind, waves, and currents);
- surveys in the coastal zone related, inter alia, to the protection of the coast against erosion;
- creating precise environmental, bathymetric, geological and acoustic maps to support research, spatial planning and investments.



3 | The Łebsko Spit, the moving dune area

The OOD has implemented an Integrated Management System (IMS), which adheres to the requirements of the ISO 9001:2015, ISO 14001:2015 and ISO 45001:2018 standards.



CONTACT

MARITIME INSTITUTE
GDYNIA MARITIME UNIVERSITY

- ph. +48 58 669 37 65
- im@im.umg.edu.pl
- im.umg.edu.pl